



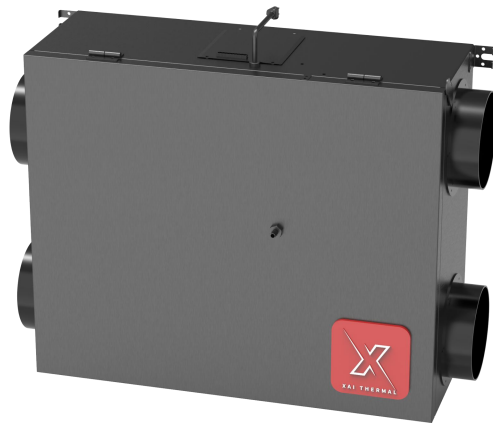
# SUBMITTAL DATA SHEET

## Energy Recovery Ventilation

**Model Number:** XEC-136AB-BU

Location: \_\_\_\_\_  
Engineer: \_\_\_\_\_  
Submitted to: \_\_\_\_\_  
Submitted by: \_\_\_\_\_  
Reference: \_\_\_\_\_

Approval: \_\_\_\_\_  
Date: \_\_\_\_\_  
Construction: \_\_\_\_\_  
Unit #: \_\_\_\_\_  
Drawing #: \_\_\_\_\_



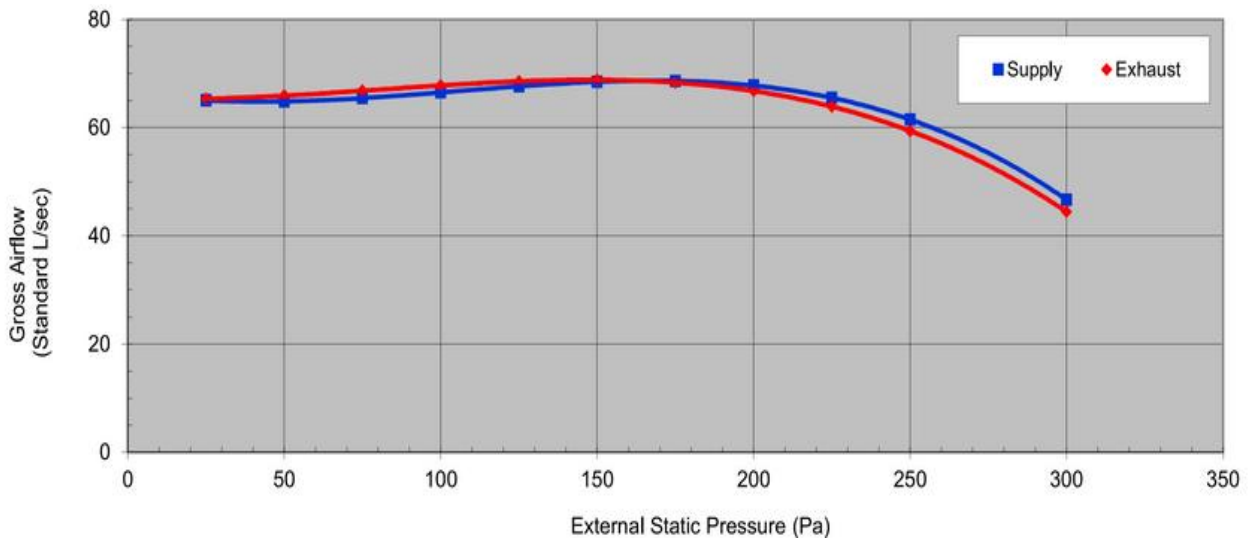
### Product Details

Power Supply	V/Ph/Hz	120/1/60
Connection Duct Diameter	in	6
Max. Circuit Amps(MCA)	A	1.6
Max.Overcurrent Protection(MOP)	A	15
Max input power	W	180
Dimensions(HxWxD)	in	9-11/16 x 21-1/2 x 25-13/16
	mm	246 x 546 x 656
Net weight	Lbs	43
	kg	19.5
Ext Static Pressure (HH/H/L)	in W.G	0.4/0.2/0.1
Airflow Rate (HH/H/L)	CFM	136/100/64
Sound Pressure	dBA	36/33/24
Power Supply Connections		L, N, Ground
Condensate Pipe Connection		NA
Operating range outdoor temperature(°F DB)		-18°F ~ 109°F
Filter level /type / Qty		Merv 8 / Washable / 2
ERV Core / type		Cross Flow / Non washable
Motor/Drive		Brushless Digitally controller/Direct

# Fan Efficacy

External Static Pressure		Net Supply Airflow	Net Supply Airflow	Gross Supply Airflow	Gross Supply Airflow	Gross Exhaust Airflow	Gross Exhaust Airflow	Power
Pa	in.w.g.	Standard L/s	CFM	Standard L/s	CFM	Standard L/s	CFM	Watts
25	0.1	63	133	65	138	65	138	86
50	0.2	63	133	65	137	66	140	95
75	0.3	63	134	65	139	67	142	106
100	0.4	64	136	67	141	68	144	116
125	0.5	66	139	68	143	69	145	126
150	0.6	66	140	68	145	69	146	137
175	0.7	66	141	69	145	68	145	144
200	0.8	66	139	68	144	67	141	154
225	0.9	63	134	66	139	64	135	151
250	1	60	126	61	130	59	126	141
300	1.2	45	96	47	99	44	94	119

# Fan Curves



# Energy Performance

Heating	Inlet Supply Temperature		Net Outdoor Airflow		Average Power (watts)	Sensible Recovery Efficiency SRE	Adjusted Sensible Recovery Efficiency ASRE	Fan Efficacy	
	°C	°F	L/s	scfm				L/s/W	cfm/W
1	0	32	30.4	63	30	74.30%	78%	0.98	2.1
2	0	32	63.9	135	92	61.60%	66%	1.5	1.46
Cooling	Inlet Supply Temperature		Net Outdoor Airflow		Average power (watts)	Total Recovery Efficiency	Adjusted Total Recovery Efficiency	Apparent Effectiveness	Net Moisture Transfer
	°C	°F	L/s	scfm					
1	35	95	26	55	29	62%	64%	78%	60%



## Feature

- **Constant airflow** -The ERV is constant airflow ensures balanced ventilation, preventing energy loss and poor air quality caused by duct resistance, filter clogging or pressure changes.
- **Auto Balancing** - Fastest installation in it's class, reducing setup time by up to 20 minutes per unit, cauce of the innovative auto-balancing and self-adjusting technology.
- **Flexible mounting option**- Including horizontal and wall-mounted configurations, enable seamless integration into a variety of applications.
- **ECM motors** - High-performance ECM motors ensure reliable, energy-efficient operation.
- **Easy mantainess** - The ERV features an easily accessible door for hassle-free maintenance and filter replacement.
- **Three speed airflow** - With a selectable airflow speed range from 64 – 136 CFM, meets the needs of a medium-large size home.
- **-13°F Low climate approved** - suit for all climate zone.
- Unit UL1812(safety) , CSA439 (performance) approved